

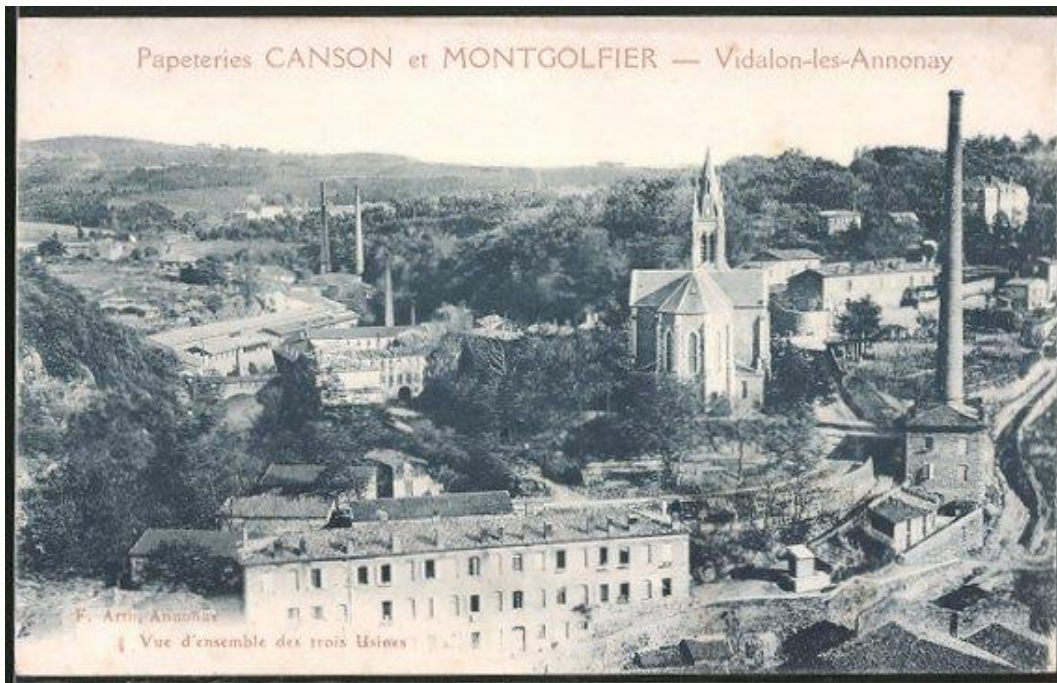
THE INTEGRITY OF THE POSTAGE STAMP A COLLECTOR'S PERSPECTIVE



Bernie Beston
FIP PRESIDENT

HISTORICAL DEVICES

THE WATERMARK



Watermarks were first employed in the middle ages as a security device on stamped revenue paper.

These were provided tax purposes not postage use.

Generally raising revenues for to finance a war or to pay for War reparations

Mills in Italy, France and Germany were the most prominent



WATERMARKS



The Rowland Hill invention of 1840 employed the use of a similar watermark device on postage stamps.



ENGRAVING



**The first new security feature
was
engraving of the design**

**This was copied from the Bank
Note printers -**



PERFORATIONS



The first stamps had no perforations.

Perforation separations were introduced for the convenience of the public - not as a security device!



POSTAGE STAMPS



Elliptical perforations

These can be copied but lessens the likelihood of copying.

AND

EMS (electro magnetic engraving)



SECURITY PRINTER



This also saw the emergence of Security Printers as we know them today.

The primary purpose was the protection of the revenue source



ENGRAVING



Engraving is an expensive, skilled and time consuming process. It survives today but has rapidly been replaced by the photogravure printing process



FORGERY



**Engraving did not prevent
the production of**

FAKES AND FORGERIES

Jean Sperati



FORGERY



**Any stamp that is faked is
a forgery**

**Faked and Forgery are often used
to describe the same item.**



POSTMARKS



Postmarks were introduced to prevent the re-use of the stamp.

Again to protect the revenue

Madam Joseph



POSTMARKS



The defacement of a stamp with biro slows down the identification of forgery

Such stamps are generally discarded by collectors hence not studied for possible fraud identification



POSTAGE STAMPS



**None of these features prevent
actually the illicit printing of
postage stamps by other non
Official or unauthorised Printers**



POSTAGE STAMPS



Usually the forged or faked stamp is identified to the Postal Authority by the philatelic community

POSTAGE STAMPS

Modern postage stamps are

Collected by:

Serious One Country collectors

general stamp collectors

Thematic Collectors

Gimmick market Collectors .

e.g. World Cup, Hobbits, Hollywood or Bollywood



PARCEL DYNAMIC



High value stamps are likely to be re-produced in the current market

The rise of ecommerce and parcel traffic only stimulates the production of such stamps



IDENTIFICATION



Modern printing techniques make the early identification of such stamp well nigh impossible –

Without collector assistance.

INVESTIGATION

After the Horse has Bolted





SECURITY PAPER



The introduction of specialty papers

New perforation features

printing techniques/design features



GUM



Gum prevents reuse of a stamp

BUT

this comes at a cost



GUM



Gum prevents reuse of a stamp

BUT

this comes at a cost

PREVENTION

Current prevention techniques

- Engraved stamps
- Special design or secret mark

Features

- Sheet layout and size
- Perforations
- Gum

PREVENTION

Current prevention techniques

- Ink (Ultra Violet, etc)
- Multi layered print
- Used in bank Notes
- Silk, Cotton, Metal or Polymer
- thread
- Hologram or similar



SOLUTIONS



identify the problem

Vigilance and Diligence

co-operation with the Trade

Co- operation with collectors

Support of both the Trade and the

Philatelic Community



POSTAGE STAMPS

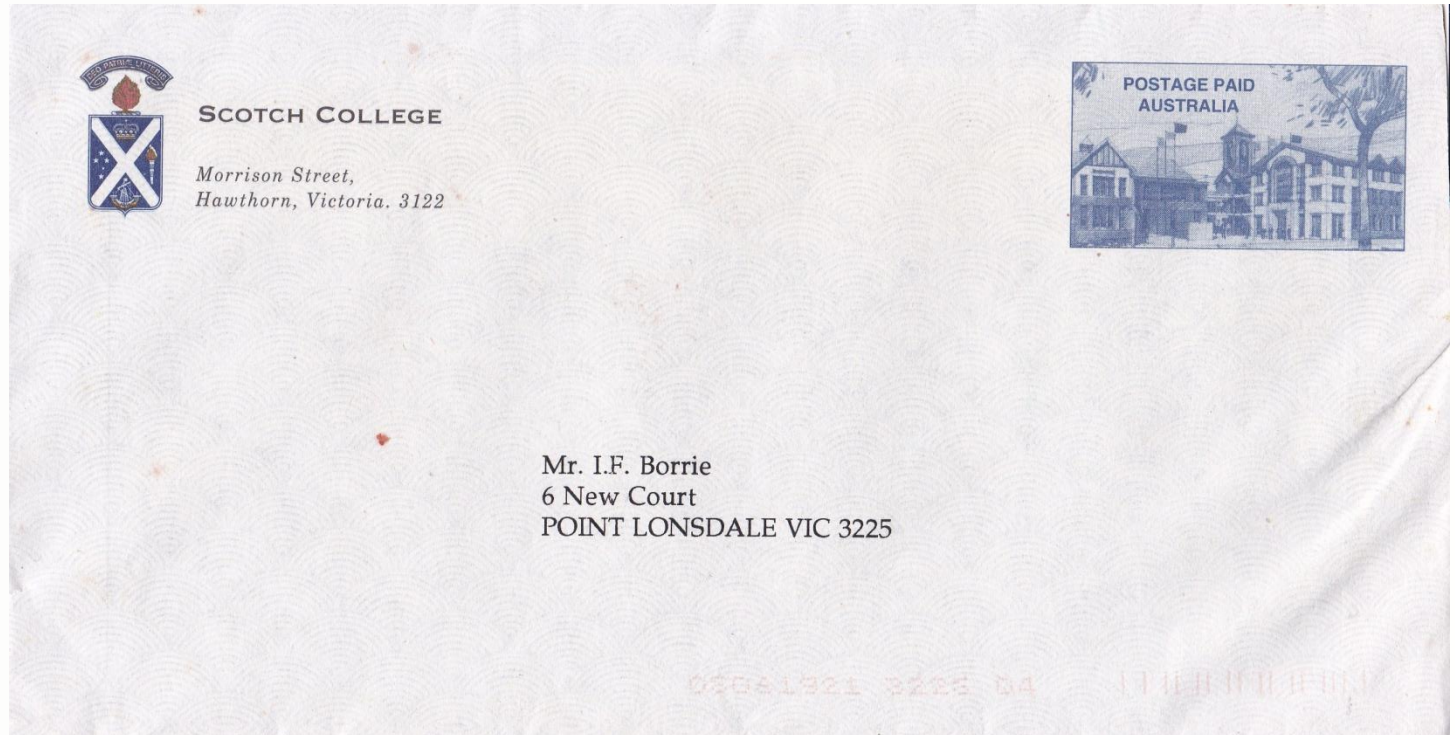


The effect on the collectors

- **Lost trust in the issuer**
- **Lost Trust in the Secondary market**
- **Loss to the Postal Administrations of the secondary market**
- **Destruction of the secondary market**

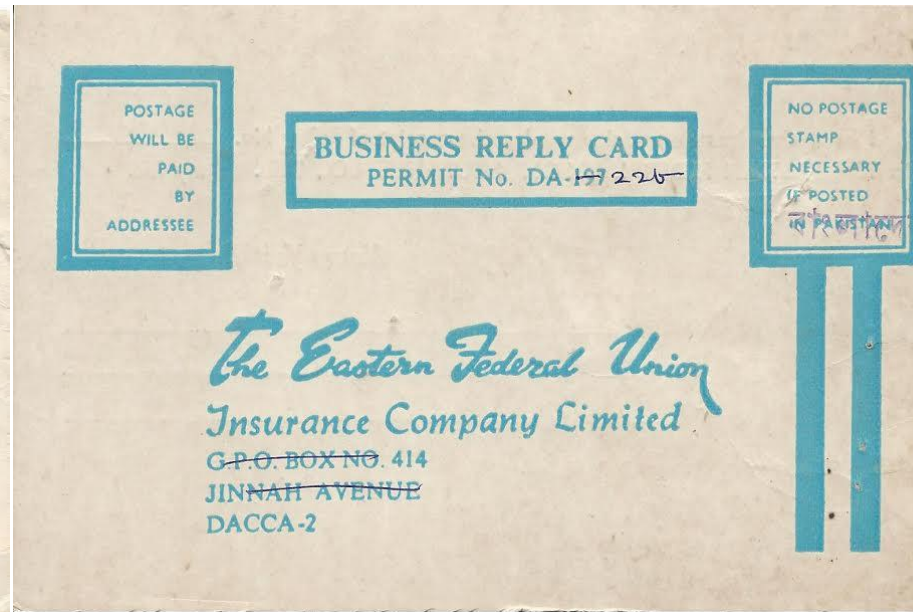
POSTAGE PAID ENVELOPES

One area of concern?



OTHER PROBLEM AREAS

REPLY PAID ENVELOPES?



These templates

The templates used in this Presentation have
been provided free of charge

by

www.presentationmagazine.com.

Their contribution to this Presentation is greatly appreciated





The End